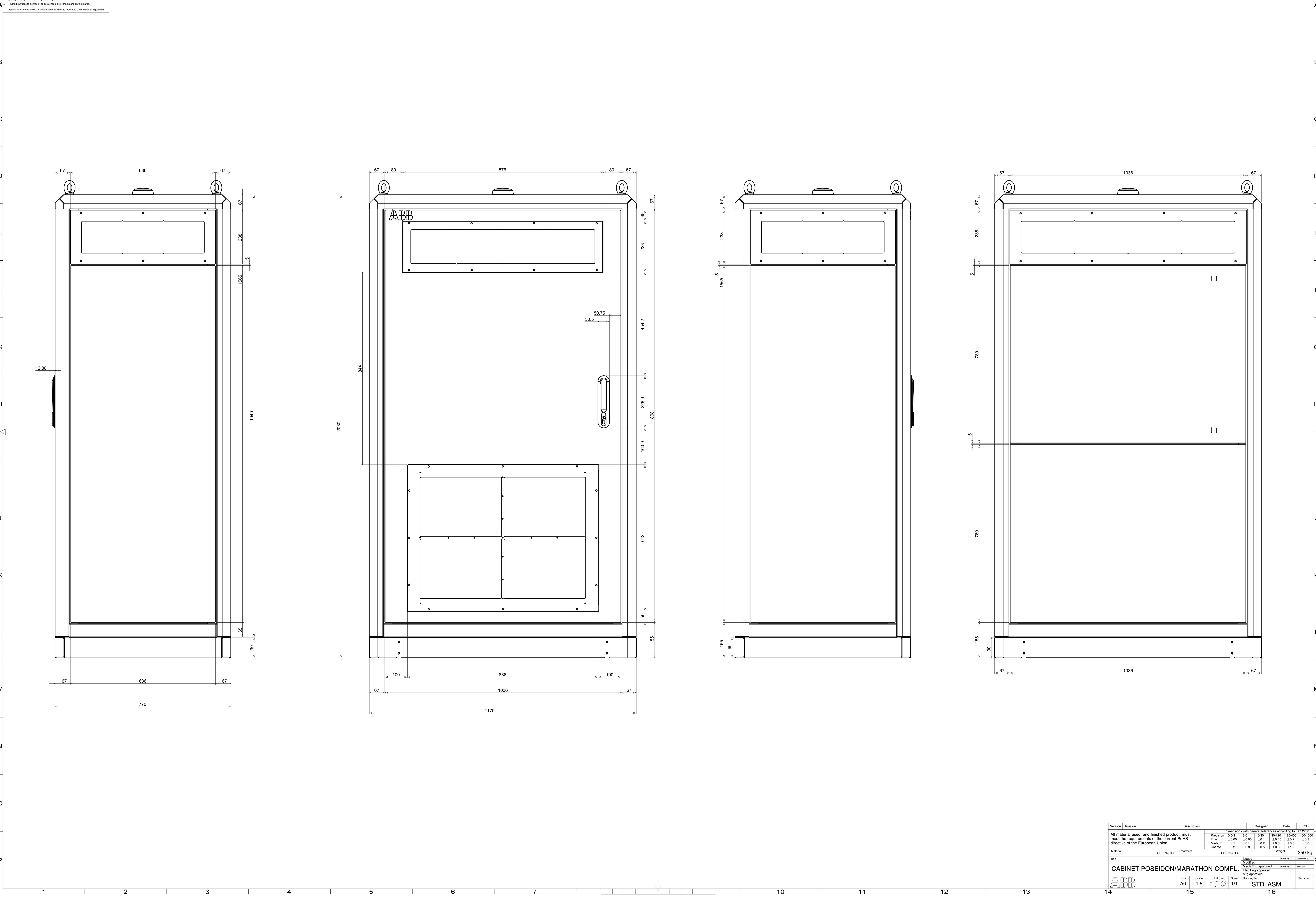


1. Product must meet current standard requirements Category A or C specified in P1
 2. Supplier's inspection must complete P1 procedure CEM 000.2
 3. Dimensions specified in this drawing are for reference only. Dimensional
 quality must be verified by the manufacturer.
 4. All parts must be adequately packaged to prevent damage in shipment and handling in use.
 5. All surfaces must be free of any contamination marks and other marks.
 6. All surfaces must be free of any contamination marks and other marks.
 Drawing is for notes and CTF dimension only. Refer to individual CAD file for 3-D geometry.



Version	Revision	Description	Designer	Date	ECO
		All material used, and finished product, must meet the requirements of the current RoHS directive of the European Union.			
		Dimensions with general tolerances according to ISO 2768			
		Precision	0.5-3	3-6	6-30
		Fine	±0.05	±0.05	±0.1
		Medium	±0.1	±0.1	±0.2
		Coarse	±0.2	±0.3	±0.5
		Weight	350 kg		
Material		Treatment	SEE NOTES		
Title		Issued	16/07/18	Document	
CABINET POSEIDON/MARATHON COMPL.		Modified			
		Exec. Eng. approved	16/07/18	Author	
		Mfg. approved			
Size		Scale	Unit (mm)	Sheet	Revision
A0		1:5	1/1	STD ASM	