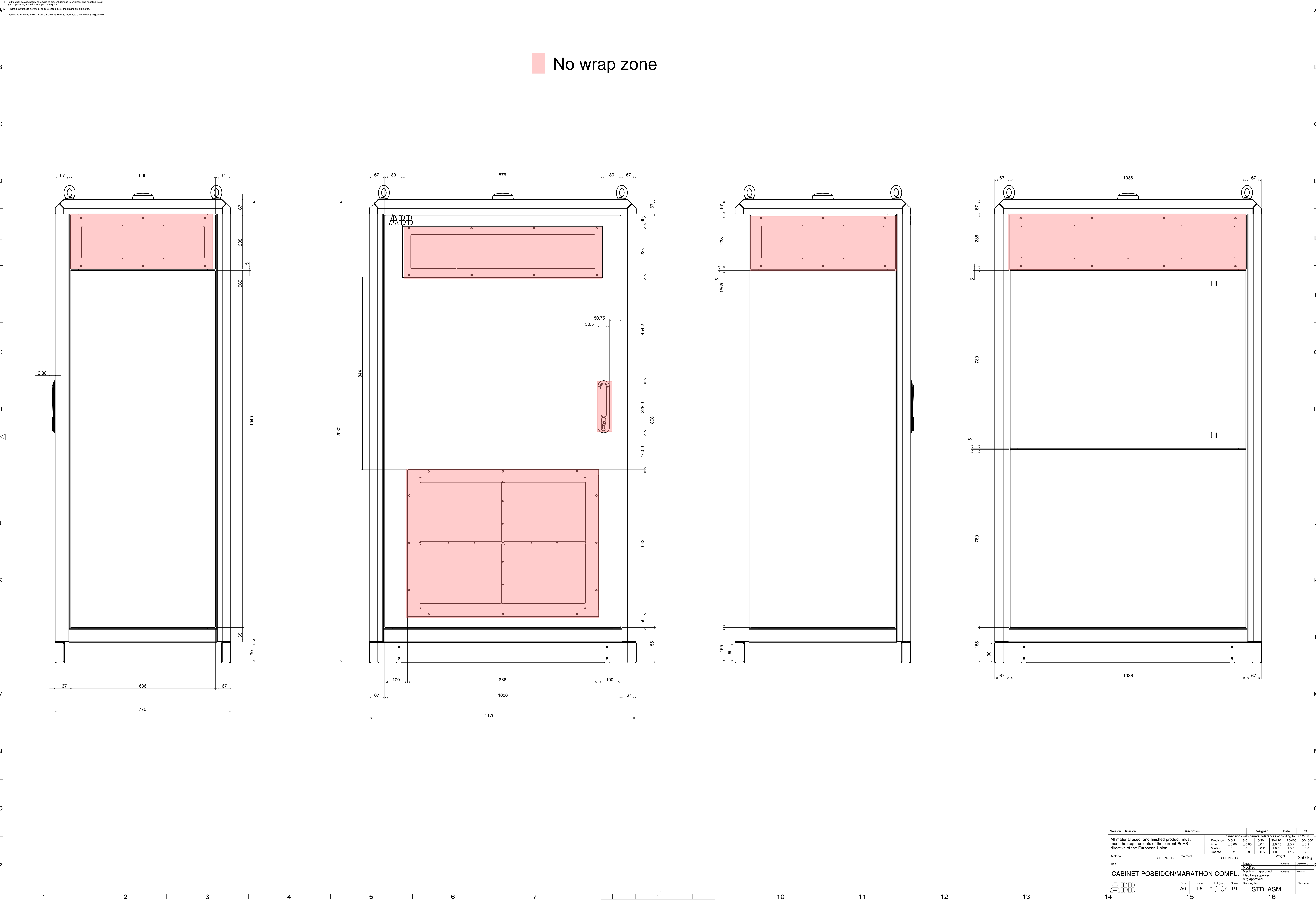


1. Product must meet current standard requirements Category A or C specified in P1
 2. Supplier's inspection must complete P1 procedure CEM 000.2
 3. Dimensions specified in this drawing are for reference and require inspection. Dimensional
 quality must be verified by the supplier before any production starts.
 4. P1001 must be implemented throughout the project. Damage in shipment and handling in use
 for inspectors procedure excepted on request. Damage in shipment and handling in use
 for inspectors procedure excepted on request.
 5. Hidden surfaces to be free of all manufacturing marks and other marks.
 Drawing is for notes and CTF dimension only. Refer to individual CAD file for 3-D geometry.

 No wrap zone



Version	Revision	Description	Designer	Date	ECO
		All material used, and finished product, must meet the requirements of the current RoHS directive of the European Union.			
		Dimensions with general tolerances according to ISO 2768			
		Precision	0.5-3	3-6	6-30
		Fine	±0.05	±0.05	±0.1
		Medium	±0.1	±0.1	±0.2
		Coarse	±0.2	±0.3	±0.5
		Weight	350 kg		
SEE NOTES		Treatment	SEE NOTES		
Title		Issued		16/07/18	01/01/18
CABINET POSEIDON/MARATHON COMPL.		Modified			
		Mech. Eng. approved		16/07/18	01/01/18
		Elec. Eng. approved			
		Mfg. approved			
Size		A0	Scale	1:5	Sheet
Unit (mm)		mm	Sheet	1/1	Drawing No.
Drawing No.		STD ASM		Revision	