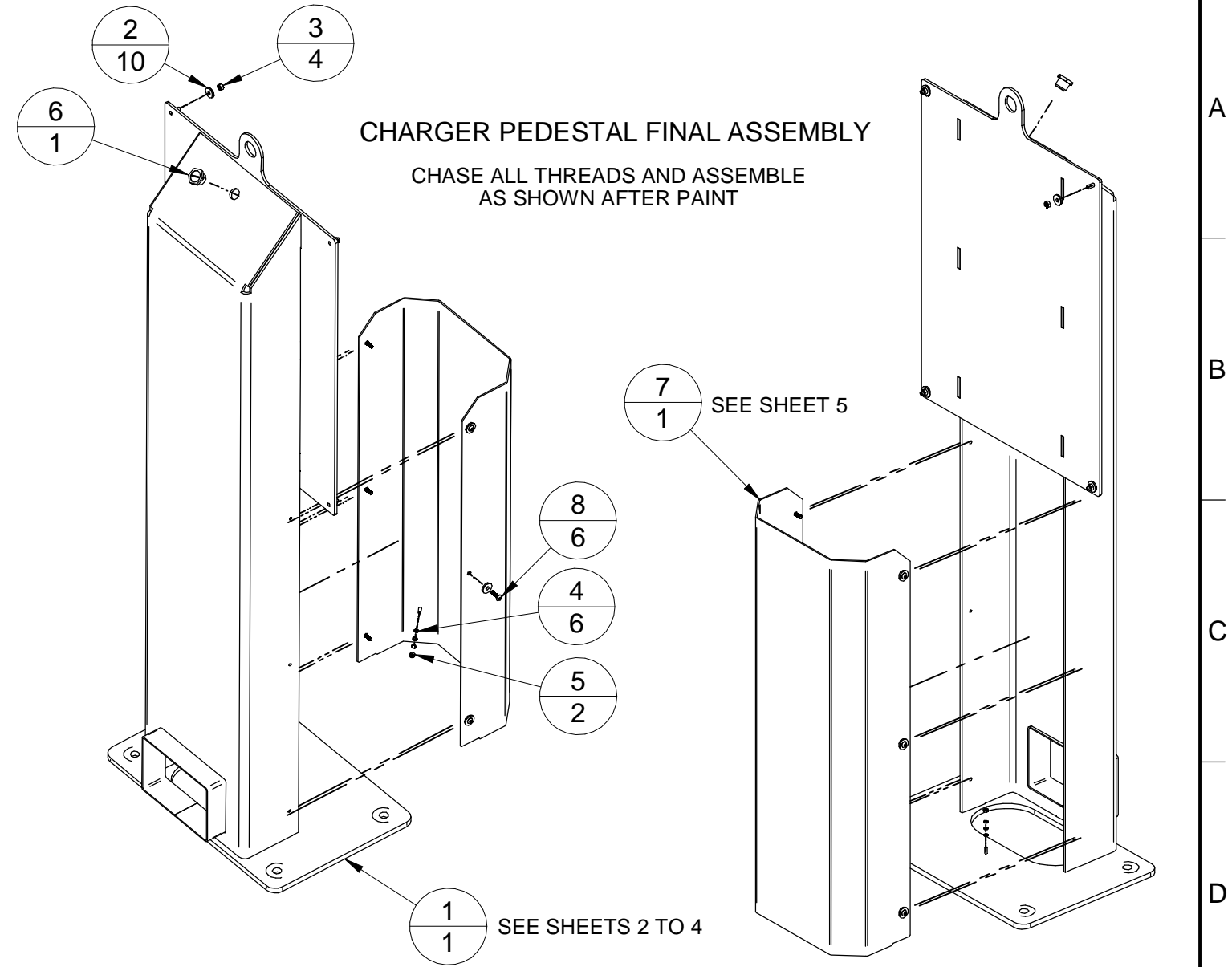
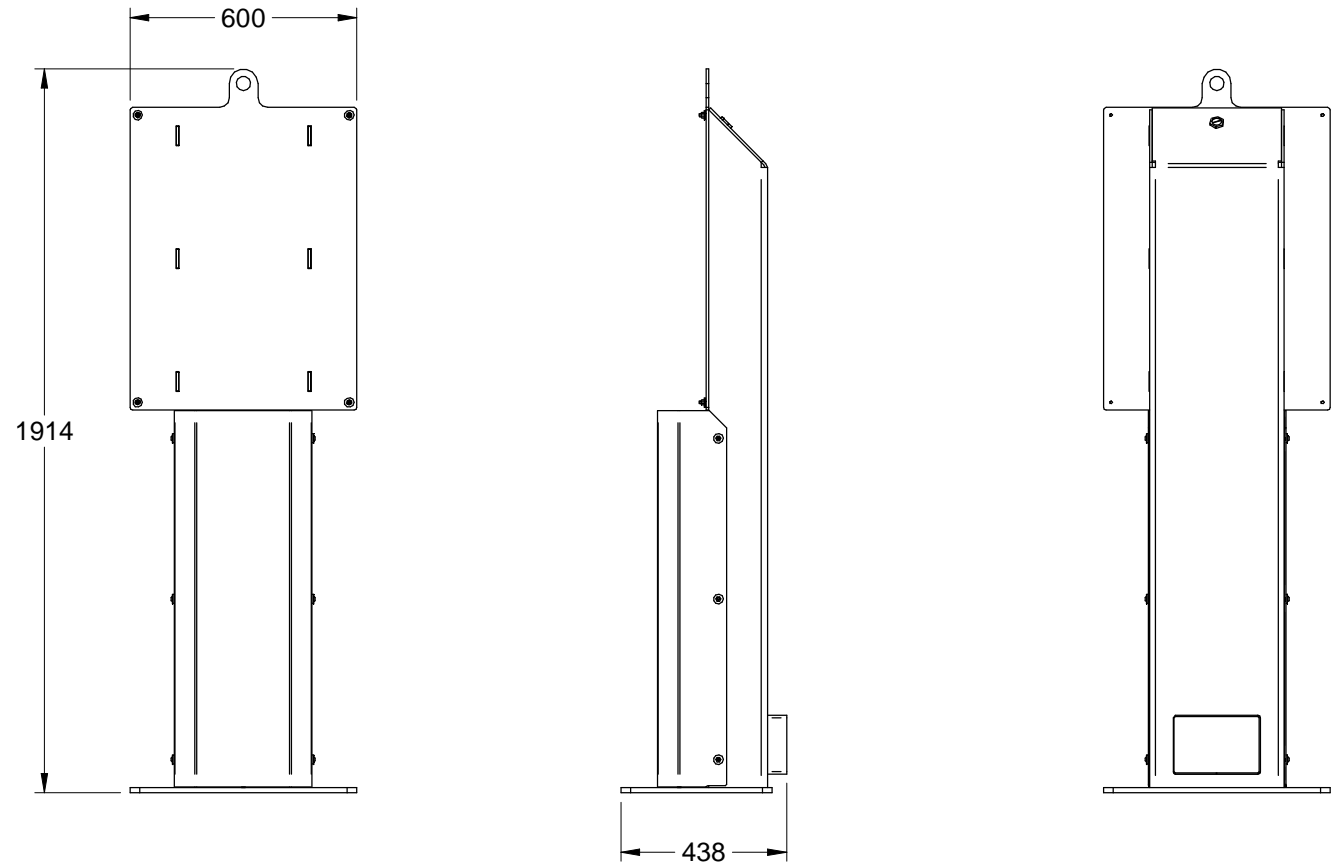
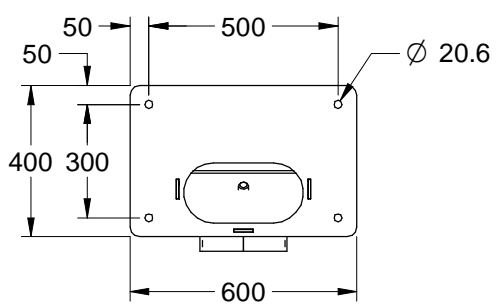


NOTE:
 1. All dimensions are in millimeters.
 2. Pedestal weldment to be hot-dip galvanized per ASTM A123 prior to powder paint.
 3. Galvanized weldment and front cover to be powdercoated (Protech DS511A99 or equiv.) RAL 7012 "basalt gray".
 4. All threads to be chased prior to assembly / shipping.
 5. Weight of completed assembly 116 Kg (255 lbs).
 6. An informative link regarding powdercoat over hot-dip galvanize may be found here:
<https://galvanizeit.org/specification-and-inspection/specifying-duplex-systems/preparing-hdg-for-powder-coating>



We reserve all rights in this document and in the information contained therein. Reproduction, use or disclosure to third parties without express authority is strictly forbidden. © Copyright ABB.

sheet	Cont
day/month/year	Cont
Issued By	
Rev. Inc.	
Designed By	
Drawn by	Reference Document

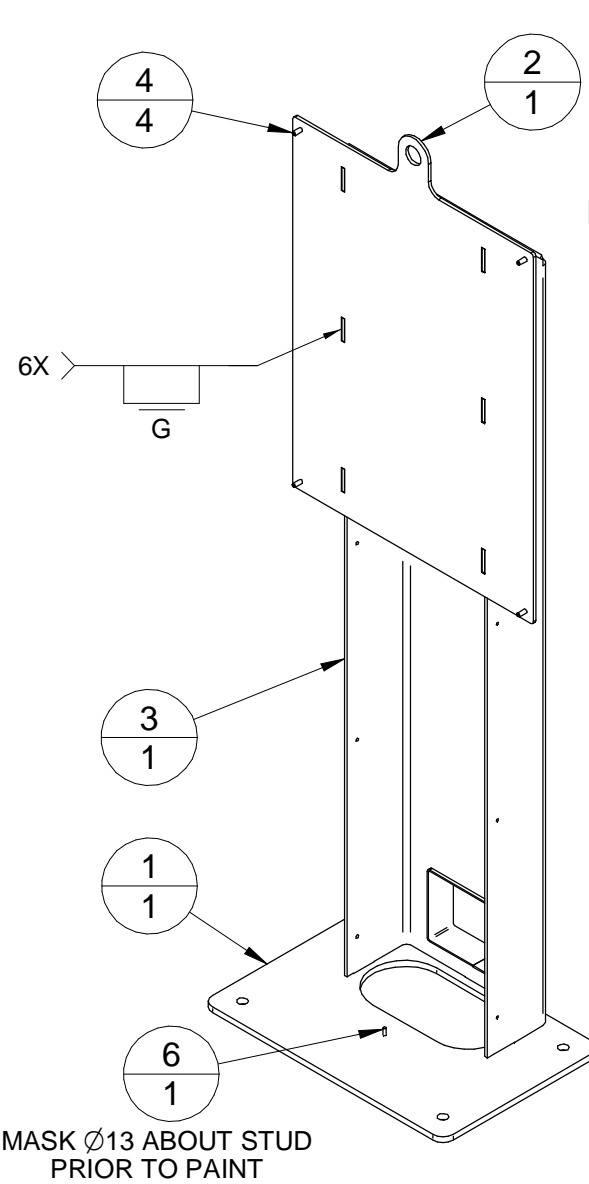
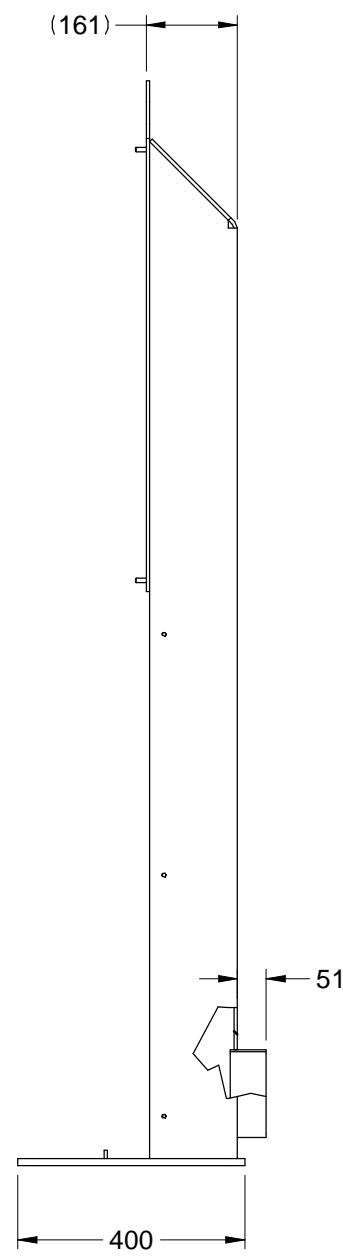
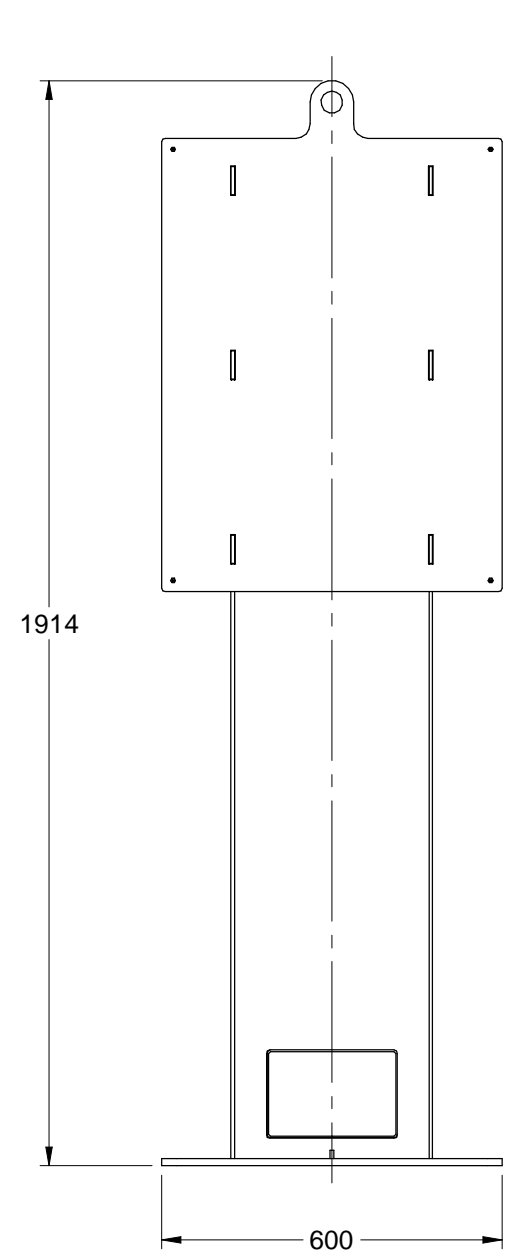


CHARGER PEDESTAL WITH REAR PASSAGE BOM			
ITEM #	Title	Description	QTY
1	PEDESTAL EV BUS CHARGER	STEEL WELDMENT HOT-DIP GALVANIZE PER ASTM A123	1
2	SEALING WASHER MCM #91195A111	PURCHASE FROM MCMMASTER-CARR OR EQUIV.	10
3	NYLON LOCKNUT M8 MCM #90576A117	PURCHASE FROM MCMMASTER-CARR OR EQUIV.	4
4	SS INT TOOTH LOCKWASHER M6 MCM #93925A270	PURCHASE FROM MCMMASTER-CARR OR EQUIV.	6
5	SS HEX NUT M6 MCM #91828A251	PURCHASE FROM MCMMASTER-CARR OR EQUIV.	2
6	HOLE PLUG 3/4 NPT IP68 MCM #7280K17	PURCHASE FROM MCMMASTER-CARR OR EQUIV.	1
7	COVER PEDESTAL EV BUS CHARGER	Galvanized steel CS SHEET G90 (Z275) minimized spangle, 11 GA.	1
8	PIN IN TORX BHSCS MCM #91900A868	PURCHASE FROM MCMMASTER-CARR OR EQUIV.	6

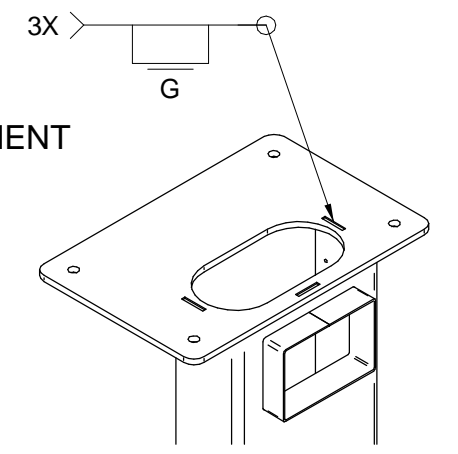
Part Title	CHARGER PEDESTAL W REAR CABLE PASSAGE	Approved By	A.LALONDE	Material	SEE LIST	Scale	NTS	Format	B	Projection	1st Angle
Part Detail	CHARGER PEDESTAL ASSEMBLY	Prepared By	F.LEVASSEUR	Finish	POWDERCOAT COVER AND WELDMENT WITH PROTECH DS511A99 OR EQUIV.	Rev. Ind.	0	Sheet	1	No. of sheets	5
Rev	Description	Modified	year/month/day	Prepared by	M.HUTCHINS	year/month/day	2019/03/18	Drawing Number	3ACD528400012		

sheet	Cont
day/month/year	Cont
Issued By	
Rev. Inc.	
Designed By	
Drawn by	Reference Document

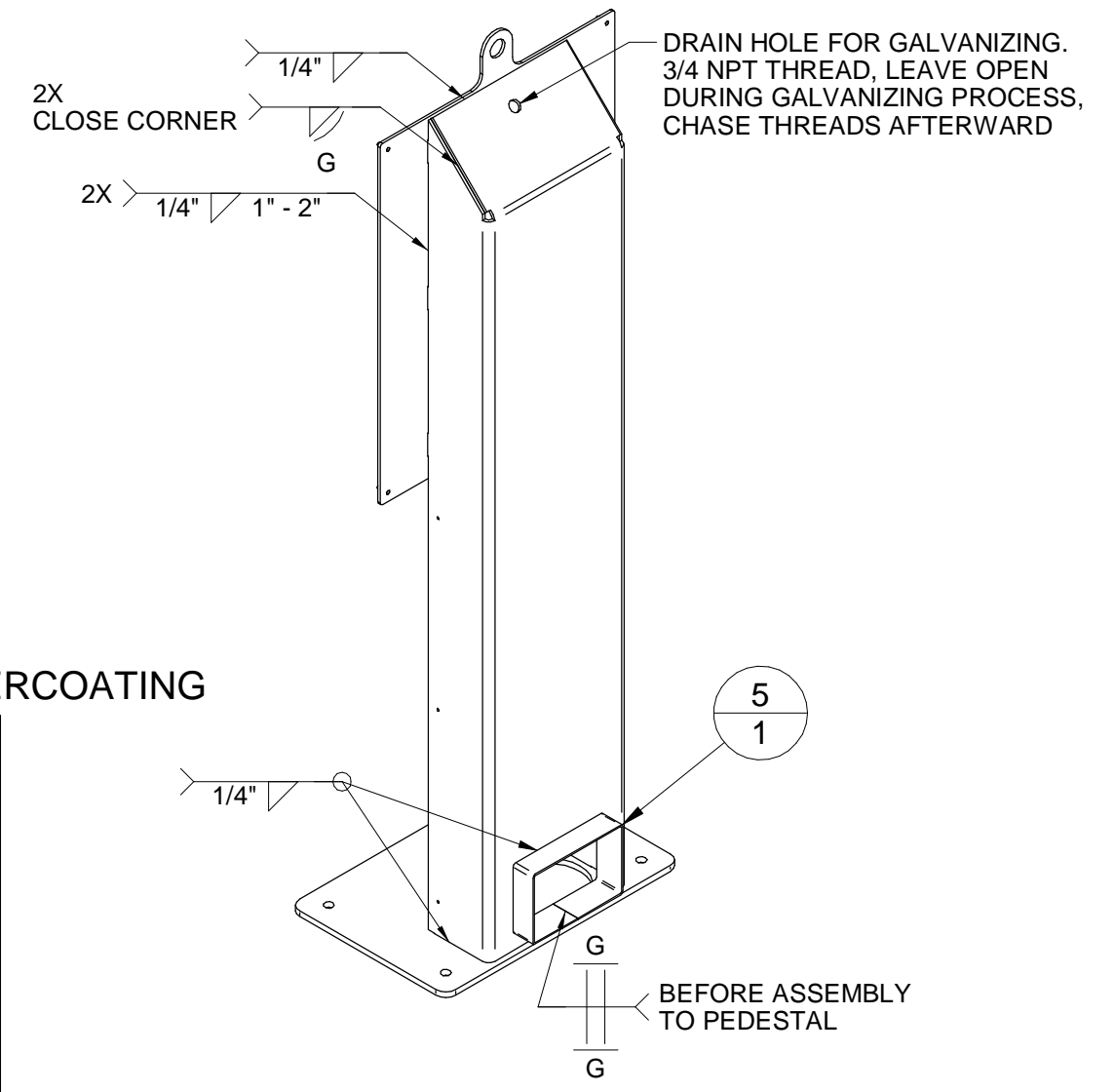
We reserve all rights in this document and in the information contained therein. Reproduction, use or disclosure to third parties without express authority is strictly forbidden. © Copyright ABB.



PEDESTAL EV BUS CHARGER WELDMENT (SHEETS 2 TO 4)



BASE PLATE UNDERSIDE



PRIOR TO PAINT, HOT-DIP GALVANIZE COMPLETED WELDMENT PER ASTM A123
 MASK THREADED STUDS AND HOLES (EX. AS NOTED) PRIOR TO GALVANIZING AND POWDERCOATING

PEDESTAL WELDMENT BOM

ITEM #	Title	Material	QTY
1	PEDESTAL BASE PLATE	Hot rolled P&O steel sheet, 1/2" ASTM A1011 CS Type B	1
2	PEDESTAL BACK PLATE	COLD ROLLED STEEL SHEET, 1/4"	1
3	PEDESTAL VERTICAL MEMBER	COLD ROLLED STEEL SHEET, 1/4"	1
4	PEM STUD FH-M8-25ZI	PEM STUD FH-M8-25ZI OR EQUIV.	4
5	PEDESTAL PASSAGE PLATE	COLD ROLLED STEEL SHEET, 11GA.	1
6	WELD STUD M6 X 15 FULL THD.	WELD STUD, STEEL, M6 X 15 FULL THD.	1

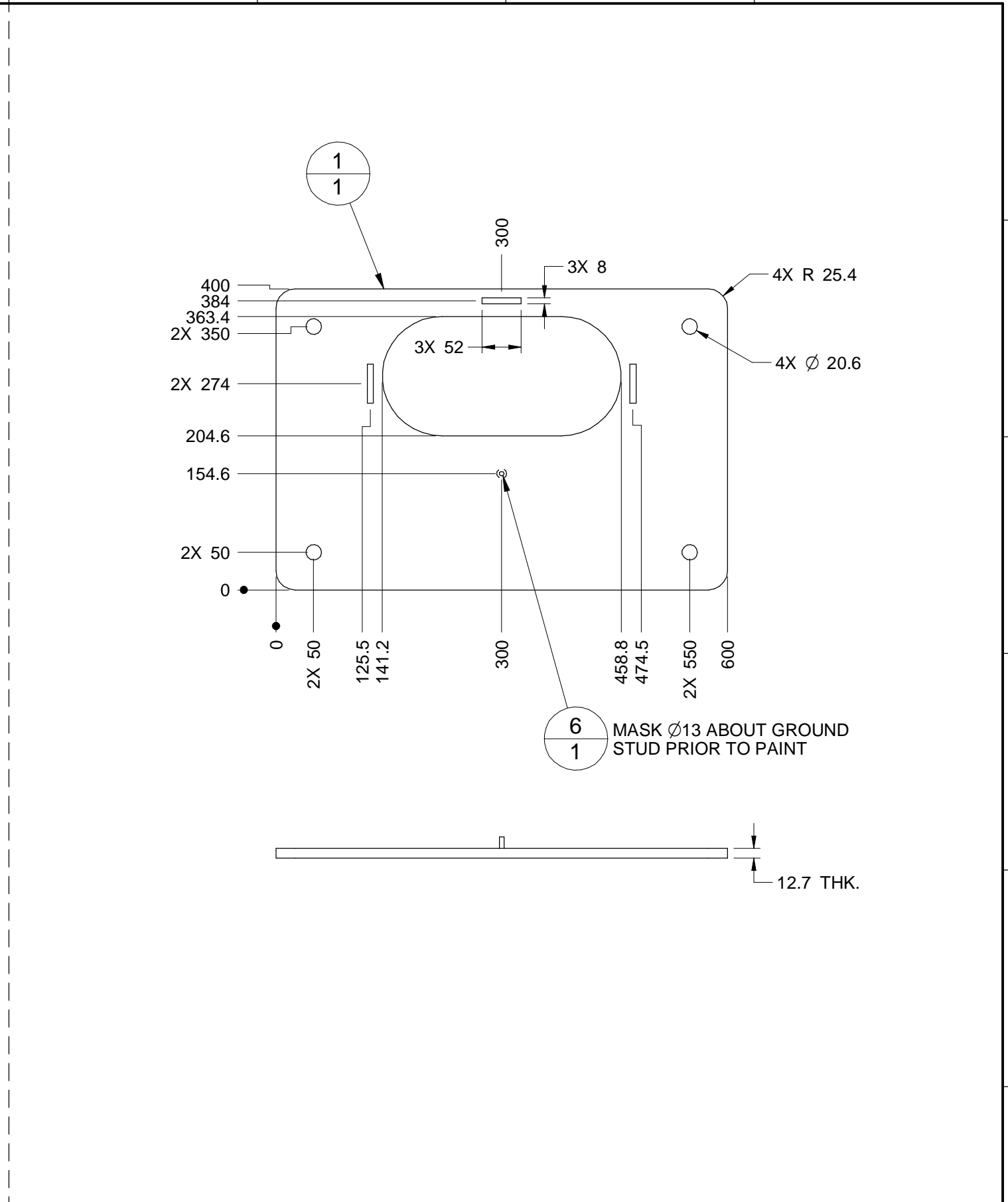
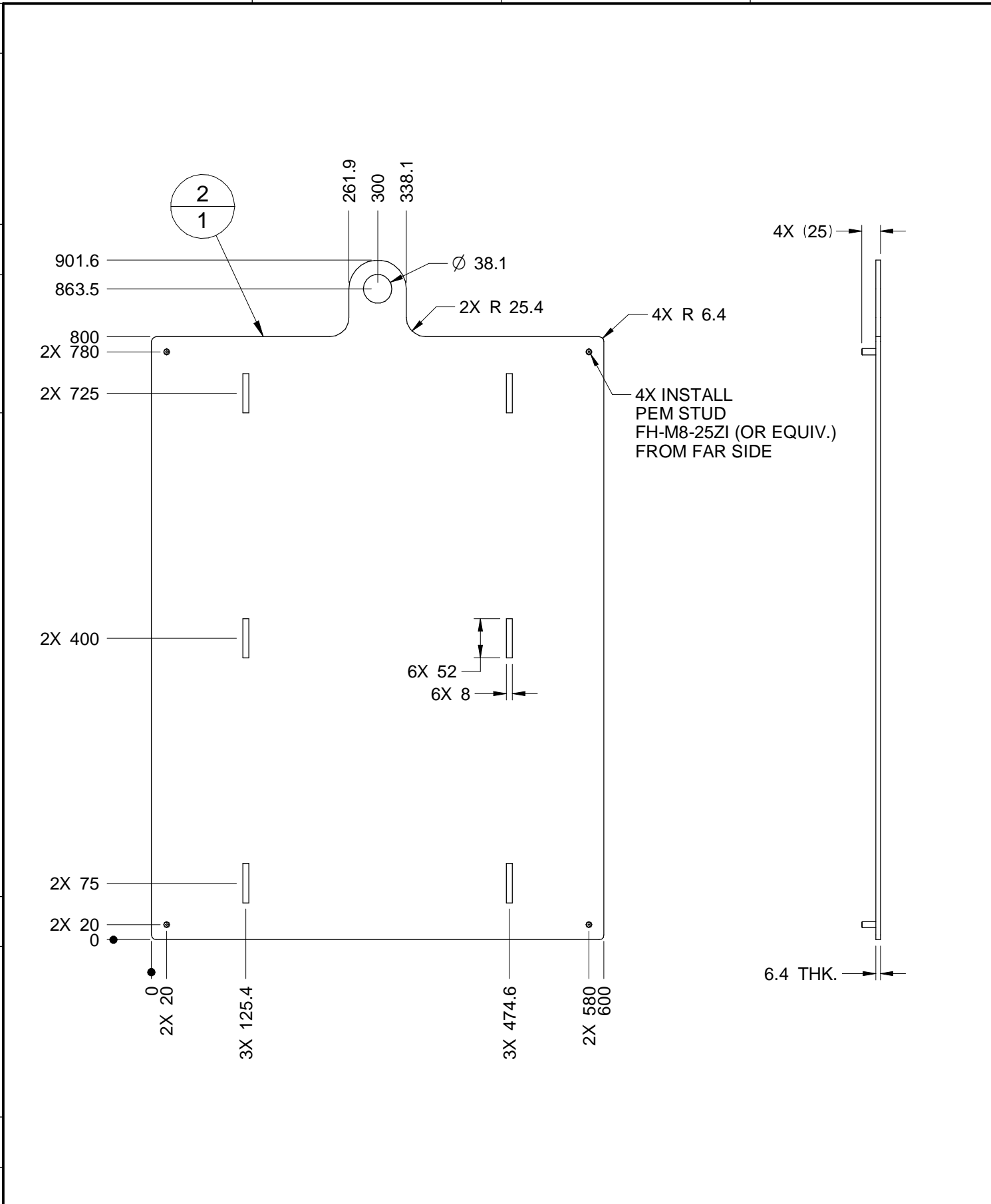
sheet	Cont
day/month/year	Cont
Issued By	
Rev. Inc.	
Designed By	
Drawn by	Reference Document

Part Title	Approved By	Material	Scale	Format	Projection
CHARGER PEDESTAL W REAR CABLE PASSAGE	A.LALONDE	SEE LIST	NTS	B	⊕
Part Detail	Prepared By	Finish	Rev. Ind.	Sheet	
PEDESTAL EV BUS CHARGER WELDMENT	F.LEVASSEUR	SEE SHEET 1	0	2	
Rev	Description	Check	year/month/day	year/month/day	Drawing Number
				2019/03/18	3ACD528400012
				No. of sheets	5

Drawn by	Reference Document	sheet
Designed By	Rev. Inc.	day/month/year
	Issued By	Cont

We reserve all rights in this document and in the information contained therein. Reproduction, use or disclosure to third parties without express authority is strictly forbidden. © Copyright ABB.

Drawn by	Reference Document	sheet
Designed By	Rev. Inc.	day/month/year
	Issued By	Cont



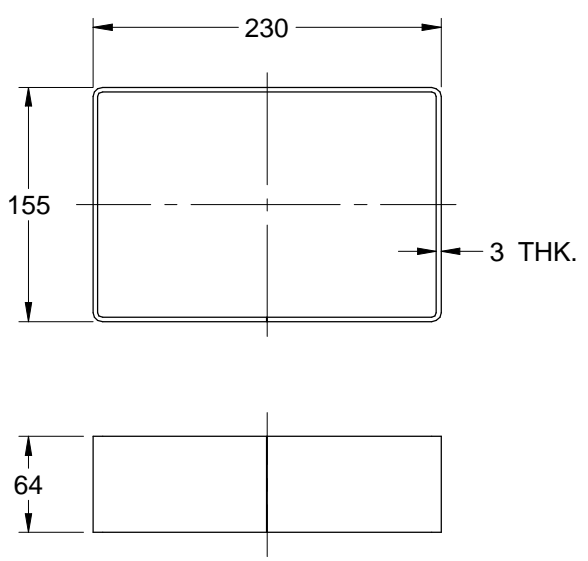
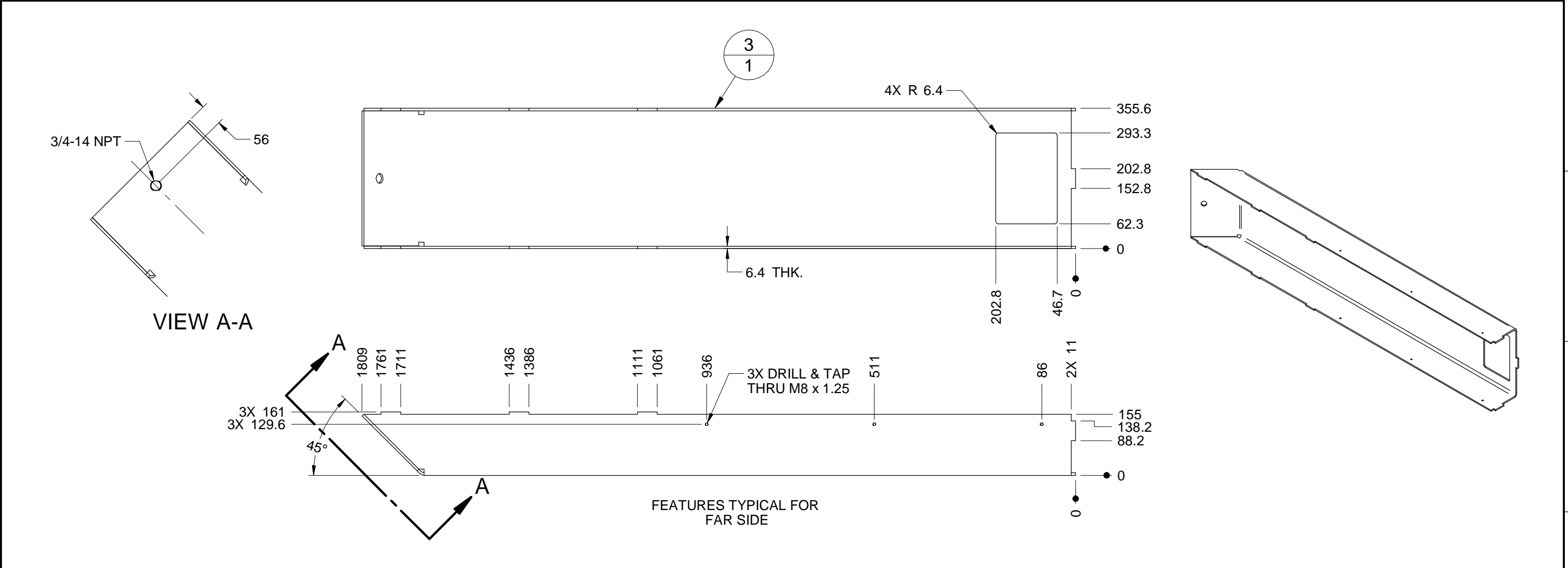
Part Title	Approved By	Material	Scale	Format	Projection
CHARGER PEDESTAL W REAR CABLE PASSAGE	A.LALONDE	SEE LIST	NTS	B	⊕
Part Detail	Prepared By	Finish	Rev. Ind.	Sheet	
PEDESTAL EV BUS CHARGER WELDMNT	F.LEVASSEUR	SEE SHEET 1	0	3	
Rev	Description	Check	year/month/day	Prepared by	Drawing Number
				M.HUTCHINS	year/month/day Drawing Number 2019/03/18 3ACD528400012
					No. of sheets 5

G:\STAAPP-engineering\G_DR_STD\ADICA_chsei_2\MANUF_DWG\5284\3ACD528400012.dft

Drawn by	Reference Document	sheet
Designed By	Rev. Inc.	day/month/year
	Issued By	Cont

We reserve all rights in this document and in the information contained therein. Reproduction, use or disclosure to third parties without express authority is strictly forbidden. © Copyright ABB.

Drawn by	Reference Document	sheet
Designed By	Rev. Inc.	day/month/year
	Issued By	Cont

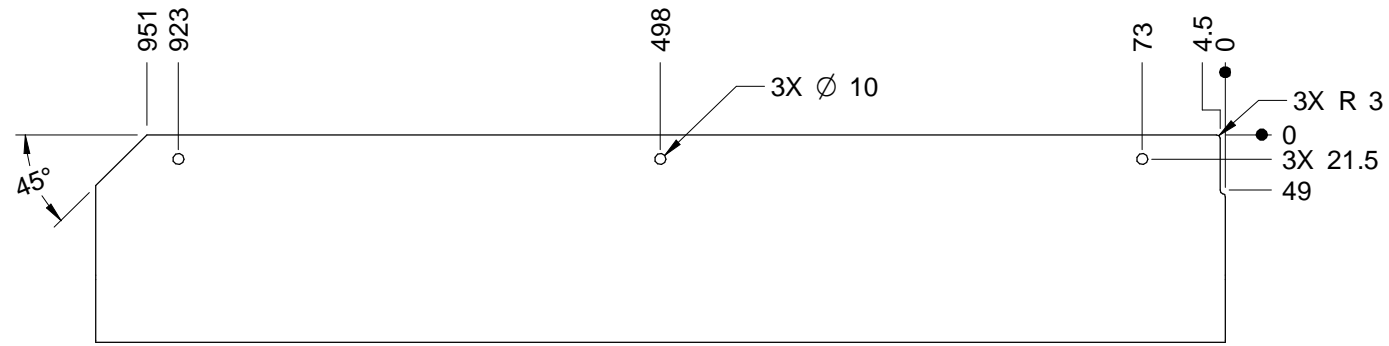
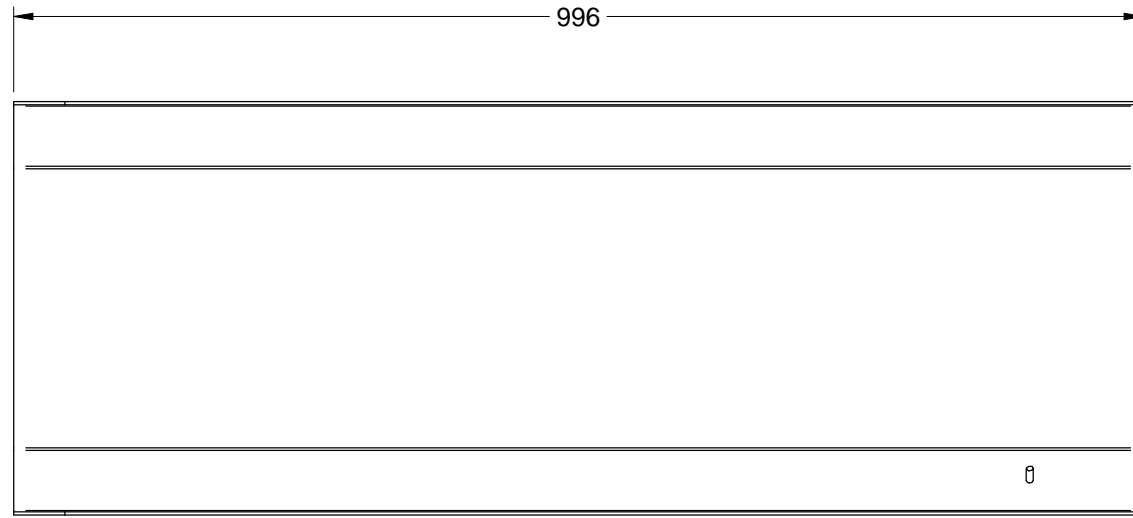


Rev	Description	Check	year/month/day	Part Title	Approved By	Material	Scale	Format	Projection
				CHARGER PEDESTAL W REAR CABLE PASSAGE	A.LALONDE	SEE LIST	NTS	B	First Angle
				Part Detail	Prepared By	Finish	Rev. Ind.	Sheet	
				PEDESTAL EV BUS CHARGER WELDMNT	F.LEVASSEUR	SEE SHEET 1	0	4	
					Prepared by	ABB	year/month/day	No. of sheets	
					M.HUTCHINS		2019/03/18	5	
							Drawing Number		
							3ACD528400012		

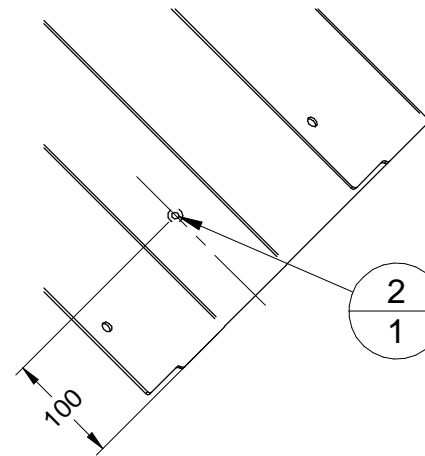
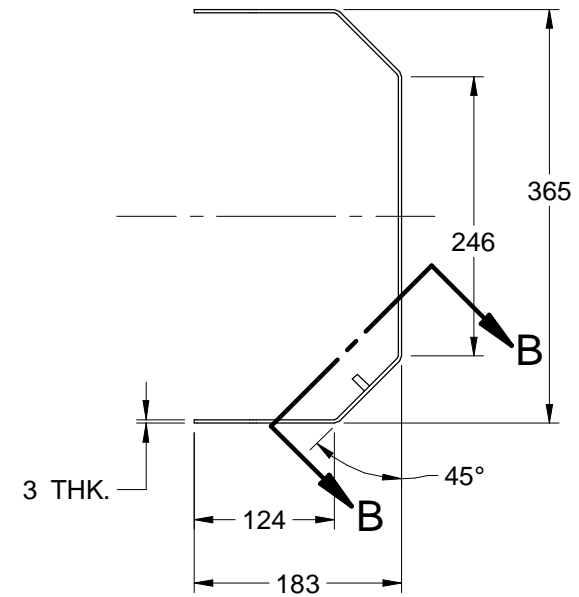
Drawn by	Reference Document	sheet
Designed By	Rev. Inc.	day/month/year
	Issued By	Cont

We reserve all rights in this document and in the information contained therein. Reproduction, use or disclosure to third parties without express authority is strictly forbidden. © Copyright ABB.

Drawn by	Reference Document	sheet
Designed By	Rev. Inc.	day/month/year
	Issued By	Cont

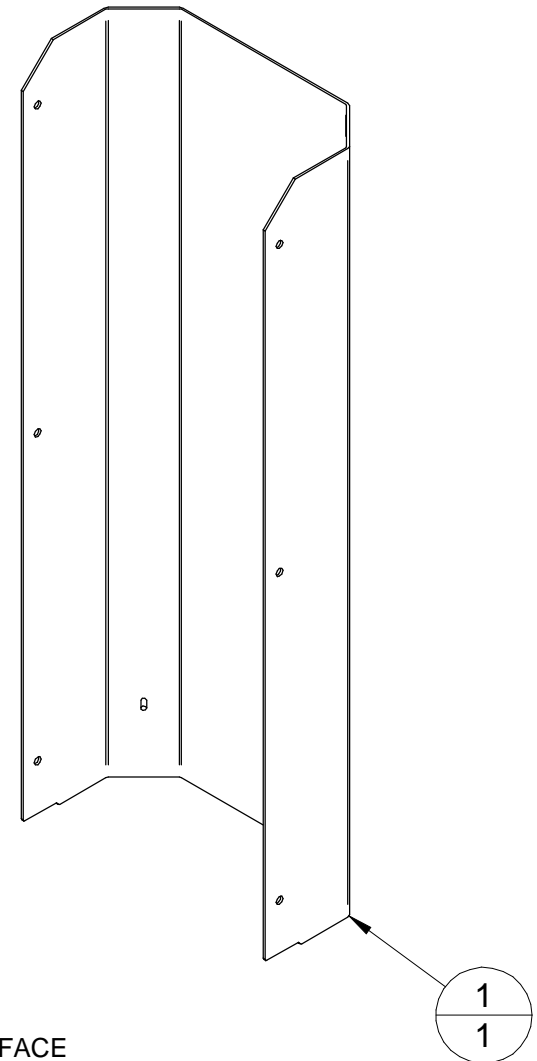


FEATURES TYPICAL OPPOSITE



VIEW B-B

2
1
CENTER ON SURFACE
MASK THREADS AND
Ø 13 ABOUT STUD
PRIOR TO PAINT



COVER BOM			
ITEM #	Title	Description	QTY
1	COVER PEDESTAL EV BUS	Galvanized steel CS SHEET G90 (Z275) minimized spangle, 11 GA.	1
2	WELD STUD M6 X 15 FULL THD.	WELD STUD, STEEL, M6 X 15 FULL THD.	1

Part Title	Approved By	Material	Scale	Format	Projection
CHARGER PEDESTAL W REAR CABLE PASSAGE	A.LALONDE	SEE LIST	NTS	B	First Angle
Part Detail	Prepared By	Finish	Rev. Ind.	Sheet	
COVER, PEDESTAL EV BUS CHARGER	F.LEVASSEUR	SEE SHEET 1	0	5	
Rev	Description	Check	year/month/day	Prepared by	Drawing Number
				M.HUTCHINS	2019/03/18 3ACD528400012
					No. of sheets
					5